

Other Ways to Draw Lesson

Stalemate is only one way to draw.
Learn about how else you can draw

Other Ways to Draw Lesson

You know you can get a draw by **STALEMATE**.

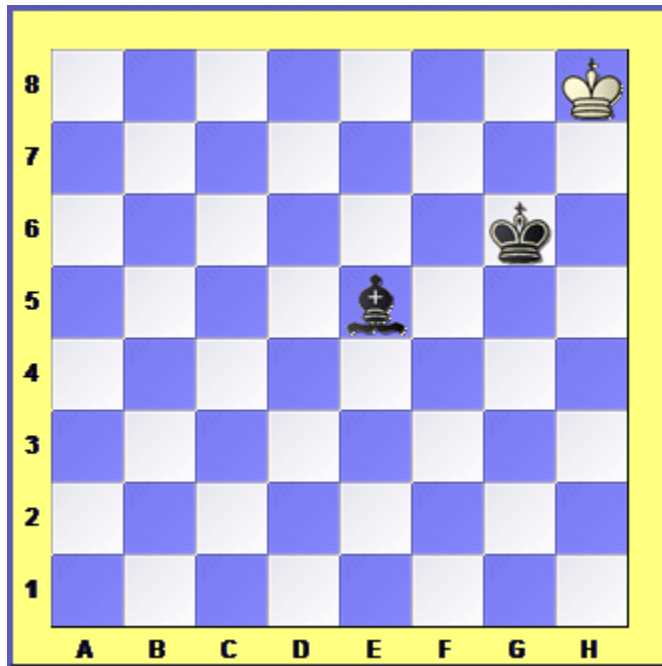
There are a few other ways of **DRAWING** a game of chess.

In this lesson we'll have a look at them.



Other Ways to Draw Lesson

STALEMATE is one way to draw the game, but not the only way.

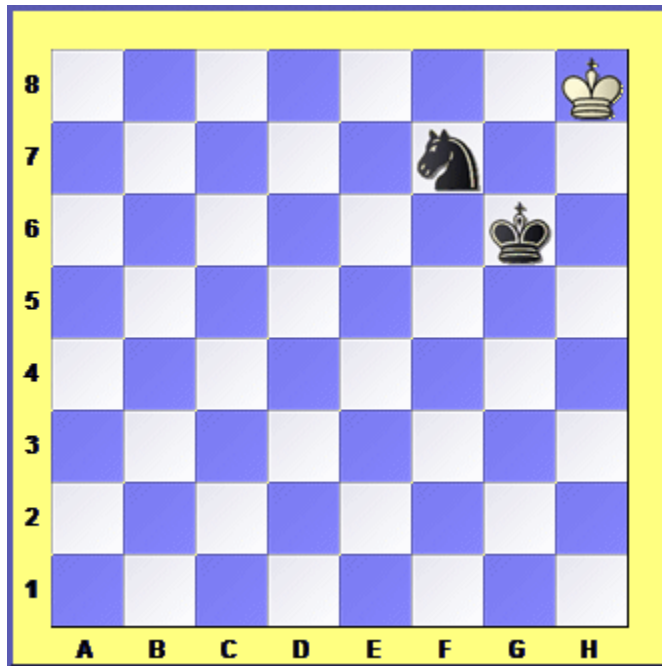


The game is declared a DRAW if it is not possible for either player to force CHECKMATE.

So if you reach a position with king against king, king against king and bishop or king against king and knight the game is a draw.

The diagram on your left demonstrates that it's not possible to CHECKMATE with a king and bishop: the next diagram will show you the same thing with a king and knight.

Other Ways to Draw Lesson



King and queen against king is an easy win.

King and rook against king is a bit harder but still easy.

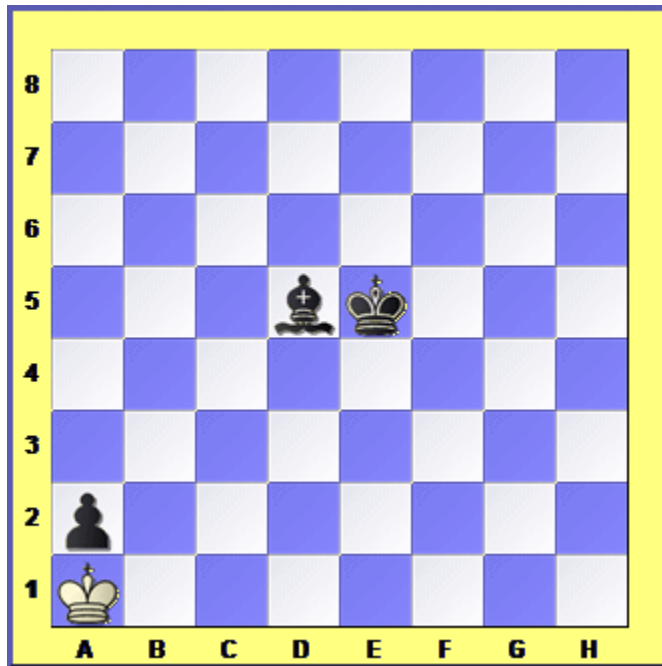
If you want to play in competitions you need to know these two.

King and two bishops against king is harder still.

King, bishop and knight against king is very hard, but possible.

King and two knights can only mate if your opponent makes a mistake.

Other Ways to Draw Lesson



A draw can be agreed at any point in the game, for instance if both players realise that no other result is possible.

In this position the game will be a draw as long as White moves his king between a1 and b2. If Black knows White will not do anything else he can offer a draw.

Other Ways to Draw Lesson

If you're playing in a competition there are two other ways you can draw a game:

You can claim a draw if you reach the same position three times with the same player to move (but NOT if you make the same move three times).

You can also claim a draw if you play 50 moves EACH without a pawn move or a capture (so if you end up with, for example, king and rook against king you have 50 moves in which to get checkmate).

